

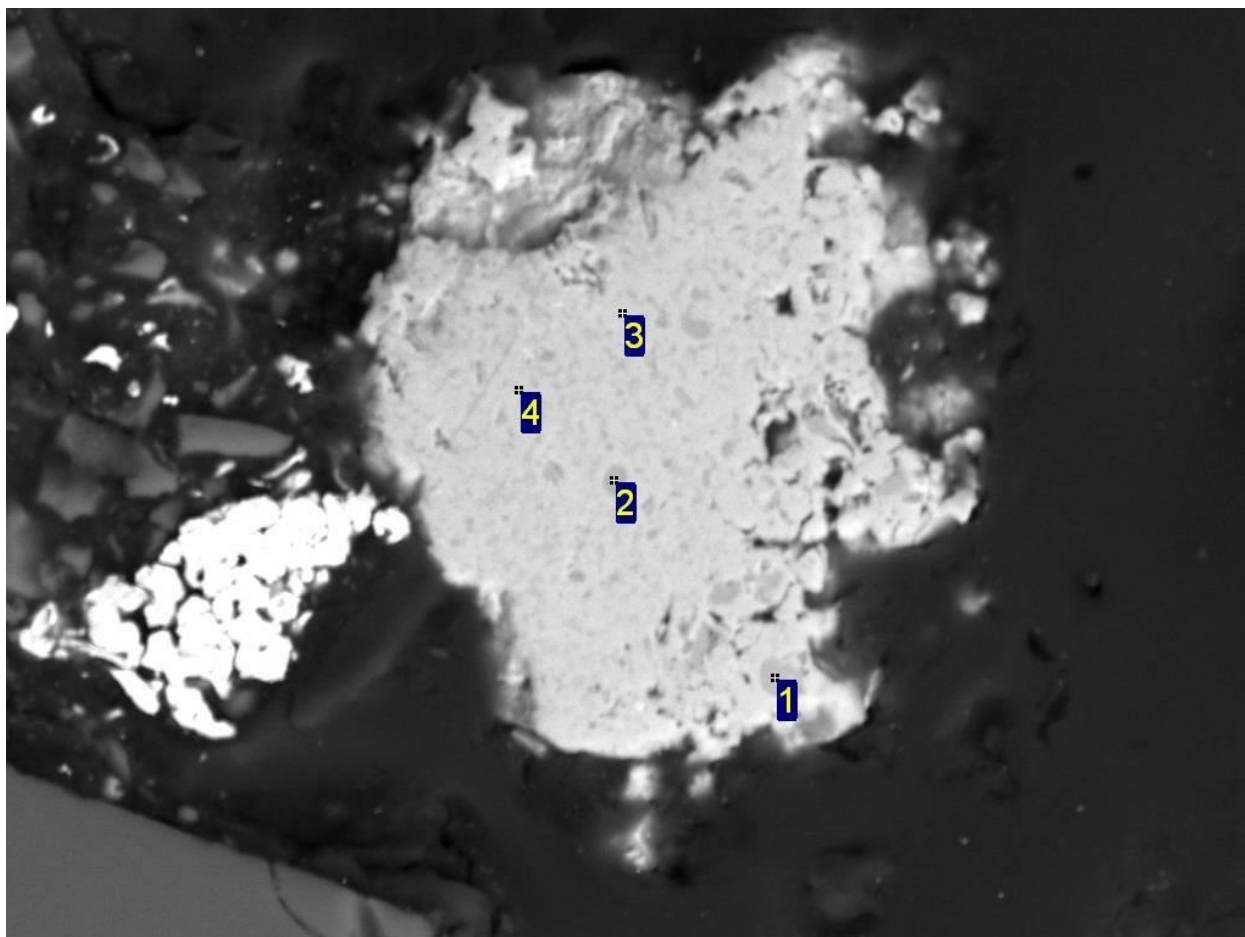
CERTIFICATE OF ANALYSIS: Certificate of Analysis (Morphology & EDS)

- QC-SEM-2025-10-21
- October 21, 2025

1. Sample Information

Parameter	Value
Product Name:	Quasicrystalline Powder (Al-Cu-Fe)

2. Analysis Results: Particle Morphology (SEM)



40µm

#	Al	Fe	Cu
1	77,22	18,95	3,83
2	73,5	20,51	5,99
3	64,2	12,28	23,52
4	65,12	15,21	20,05

3. Methodology & Equipment

#	Parameter	Description
1	Analysis Method:	Scanning Electron Microscopy (SEM)
2	Composition Method:	Energy-Dispersive X-ray Spectroscopy (EDS)